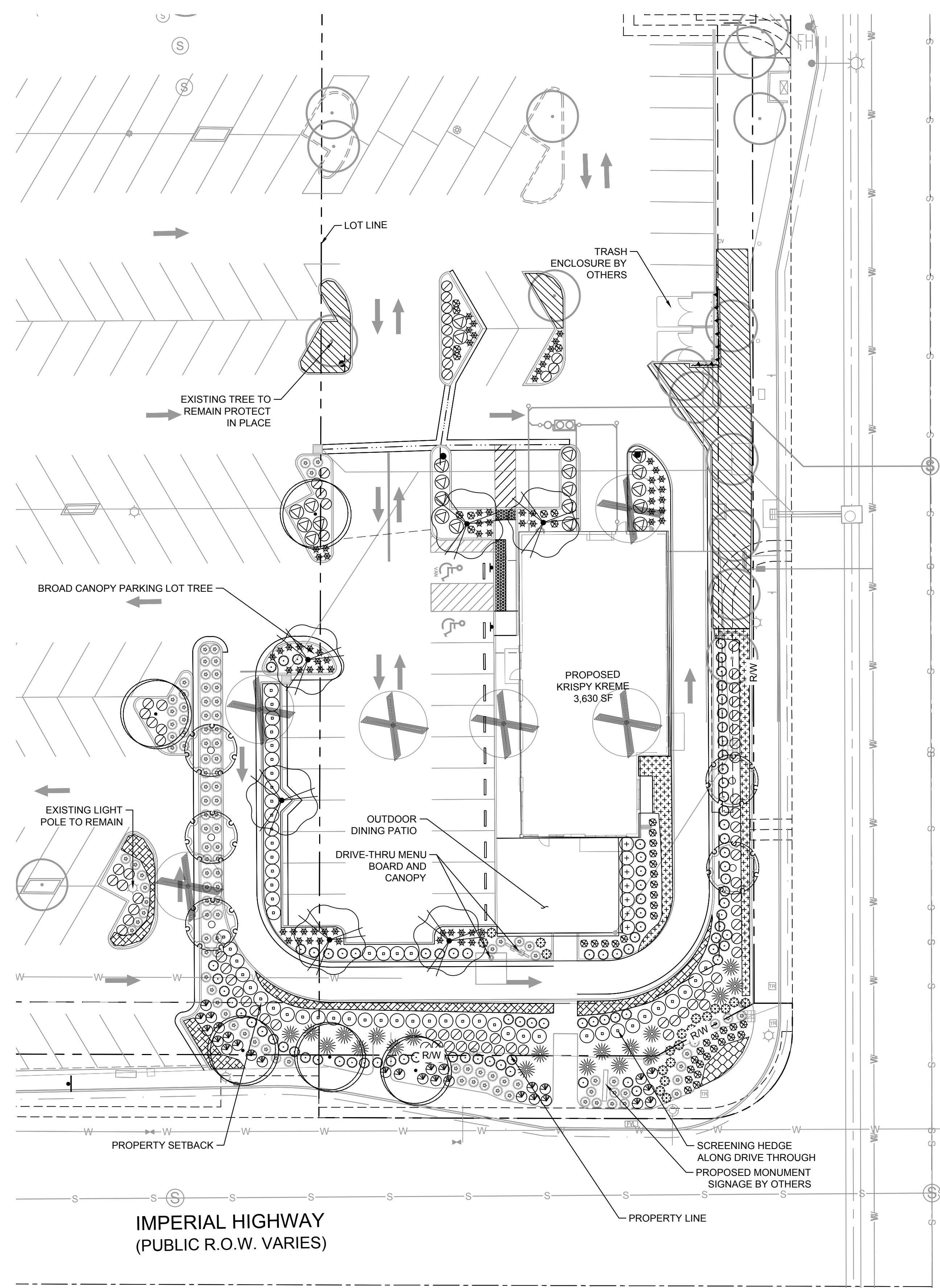




Project: Krinsky, James, Sheet: Landscape, Imperial Highway, San Diego, CA, Date: 3/10/2023, 03:53:22pm, User: jkramer, Scale: AS SHOWN, Title: PRELIMINARY LANDSCAPE PLAN, No. 4 OF 4  
 This document, together with the contract and related documents, shall constitute the entire agreement between the client and the consultant. No oral or written agreement, modification or amendment to this document shall be valid unless it is in writing and signed by both parties.

STATE OF CALIFORNIA ESTIMATED WATER USE						
TOTAL WATER USE IS CALCULATED BY SUMMING THE AMOUNT OF WATER ESTIMATED FOR EACH HYDROZONE. WATER USE FOR EACH HYDROZONE IS ESTIMATED WITH THE FOLLOWING FORMULA:						
ESTIMATED TOTAL WATER USE (ETWU) = GAL / YEAR PER HYDROZONE						
ET ADJUSTMENT FACTOR (ETAF) = 0.55 ETAF FOR RESIDENTIAL LANDSCAPE 0.45 ETAF FOR NON-RESIDENTIAL LANDSCAPE 0.8 ETAF FOR EXISTING NON-REHABILITATED LANDSCAPE SPECIAL LANDSCAPE SHALL NOT EXCEED 1.0 ETAF						
PLANT FACTOR (PF) = WATER USE CLASSIFICATION OF LANDSCAPE SPECIES						
HYDROZONE AREA (HA) = (SF OF LANDSCAPE) OR (32 SF / TREE)						
CONVERSION FACTOR (CONVERTS ACRE-INCHES PER ACRE PER YEAR TO GALLONS PER SQUARE FOOT PER YEAR = 0.62)						
IRRIGATION EFFICIENCY (IE) = 0.75 (OVERHEAD SPRAY) 0.81 (DRIP)						
SPECIAL LANDSCAPE AREA (SLA) = SF OF EDIBLE PLANTS, RECREATIONAL AREAS, AREAS IRRIGATED WITH RECYCLED WATER, OR WATER FEATURES USING RECYCLED WATER						
EVAPOTRANSPIRATION RATE (ET <sub>o</sub> ) = QUANTITY OF WATER EVAPORATED FROM ADJ. SOIL AND TRANSPIRED BY PLANTS OVER A SPECIFIED TIME						
ETWU = [(ET <sub>o</sub> ) * (PF) * (HA) * (0.62)] / (IE)						
MAWA = (ET <sub>o</sub> ) * (0.62) [ETAF] * (SUM OF SLA & HA) + [(1-ETAF) * (SLA)]						
HYDROZONE "A" (DRIP)						
ETO	PF	HA	CONVERSION FACTOR	IE	SLA	ETWU (GAL/YEAR)
49.70	0.30	9,656	0.62	0.81	-	110,199.99
HYDROZONE "B" (BUBBLER)						
ETO	PF	HA	CONVERSION FACTOR	IE	SLA	ETWU (GAL/YEAR)
49.70	0.30	512	0.62	0.75	-	6,310.71
ESTIMATED TOTAL WATER USE (GAL/YEAR)						116,510.70
MAXIMUM APPLIED WATER ALLOWANCE (MAWA)						
ETO	SUM OF HA	CONVERSION FACTOR	ETAF	SUM OF SLA	MAWA(GAL/YEAR)	
49.70	10,168.00	0.62	0.45	-	140,992.54	
MAXIMUM APPLIED WATER ALLOWANCE (GAL/YEAR)						140,992.54
MAXIMUM APPLIED WATER ALLOWANCE PERCENT OF ESTIMATED TOTAL WATER USE						82.64%



CONCEPTUAL PLANTING SCHEDULE				
TREES	BOTANICAL / COMMON NAME	CONT.	WUCOLS	
	ARBUTUS X 'MARINA' / STRAWBERRY TREE STANDARD TRUNK	24" BOX	LOW	
	EXISTING TREE / TO BE REMOVED	EXISTING	-	
	EXISTING TREE / TO REMAIN	EXISTING	-	
	LOPHOSTEMON CONFERTUS / BRISBANE BOX	24" BOX	MODERATE	
	PARKINSONIA FLORIDA / BLUE PALO VERDE	24" BOX	VERY LOW	
SHRUBS	BOTANICAL / COMMON NAME	CONT.	WUCOLS	SPACING
	BOUTELOUA GRACILIS 'BLONDE AMBITION' / BLONDE AMBITION BLUE GRAMA	5 GAL.	LOW	3' O.C.
	FESTUCA MAIREI / ATLAS FESCUE	1 GAL.	LOW	3' O.C.
	FICUS PUMILA / CREEPING FIG	5 GAL.	MODERATE	3' O.C.
	FURCRAEA FOETIDA / MAURITIUS HEMP	15 GAL.	LOW	AS SHOWN
	LEUCADENDRON X 'HAWAII MAGIC' / ROYAL HAWAIIAN MAGIC CONEBUSH	15 GAL.	LOW	4' O.C.
	MUHLENBERGIA CAPILLARIS / PINK MUHLY GRASS	1 GAL.	LOW	4' O.C.
	MUHLENBERGIA RIGENS / DEER GRASS	1 GAL.	LOW	4' O.C.
	MYRSINE AFRICANA / AFRICAN BOXWOOD	5 GAL.	LOW	4' O.C.
	PEROVSKIA ATRIPLICIFOLIA / RUSSIAN SAGE	5 GAL.	LOW	3' O.C.
	SENECIO VITALIS / BLUE CHALK FINGERS	1 GAL.	LOW	3' O.C.
	WESTRINGIA FRUTICOSA 'MORNING LIGHT' / MORNING LIGHT COAST ROSEMARY	5 GAL.	LOW	3' O.C.
	WESTRINGIA FRUTICOSA 'BLUE GEM' / COAST ROSEMARY	15 GAL.	LOW	4' O.C.
GROUND COVERS	BOTANICAL / COMMON NAME	CONT.	WUCOLS	SPACING
	ACHILLEA X 'MOONSHINE' / MOONSHINE YARROW	1 GAL.	LOW	2' O.C.
	GAZANIA RIGENS LEUCOLAENA / TRAILING GAZANIA	1 GAL.	LOW	1.5' O.C.
	SENECIO SERPENS / BLUE CHALKSTICKS	1 GAL.	LOW	1.5' O.C.
	EXISTING			
	EXISTING LANDSCAPE / TO REMAIN	EXISTING		

**LANDSCAPE NOTE:**  
 THE SELECTION OF PLANT MATERIAL IS BASED ON CLIMATIC, AESTHETIC, AND MAINTENANCE CONSIDERATIONS. ALL PLANTING AREAS SHALL BE PREPARED WITH APPROPRIATE SOIL AMENDMENTS, FERTILIZERS AND APPROPRIATE SUPPLEMENTS BASED UPON A SOILS REPORT FROM AN AGRICULTURAL SUITABILITY SOIL SAMPLE TAKEN FROM THE SITE. DECOMPOSED GRANITE SHALL FILL IN BETWEEN SHRUBS TO SHIELD THE SOIL FROM THE SUN, EVAPOTRANSPIRATION, AND RUN-OFF. ALL SHRUB BEDS SHALL BE MULCHED TO A 3" DEPTH TO HELP CONSERVE WATER, LOWER SOIL TEMPERATURE, AND REDUCE WEED GROWTH. THE SHRUBS SHALL BE ALLOWED TO GROW IN THEIR NATURAL FORMS. ALL LANDSCAPE IMPROVEMENTS SHALL FOLLOW THE GUIDELINES SET FORTH BY THE CITY OF LA HABRA MUNICIPAL CODE.

**IRRIGATION NOTE:**  
 AN AUTOMATIC IRRIGATION SYSTEM SHALL BE INSTALLED TO PROVIDE 100% COVERAGE FOR ALL PLANTING AREAS SHOWN ON THE PLAN. THE WATER SUPPLY FOR THIS SITE IS A POTABLE WATER CONNECTION AND A DEDICATED IRRIGATION METER WILL BE PROVIDED. LOW VOLUME EQUIPMENT SHALL PROVIDE SUFFICIENT WATER FOR PLANT GROWTH WITH NO WATER LOSS DUE TO WATER CONTROLLERS, AND OTHER NECESSARY IRRIGATION EQUIPMENT. ALL POINT SOURCE SYSTEM SHALL BE ADEQUATELY FILTERED AND REGULATED PER THE MANUFACTURER'S RECOMMENDED DESIGN PARAMETERS. ALL IRRIGATION IMPROVEMENTS SHALL FOLLOW THE GUIDELINES SET FORTH BY THE CITY OF XXXXX MUNICIPAL CODE.

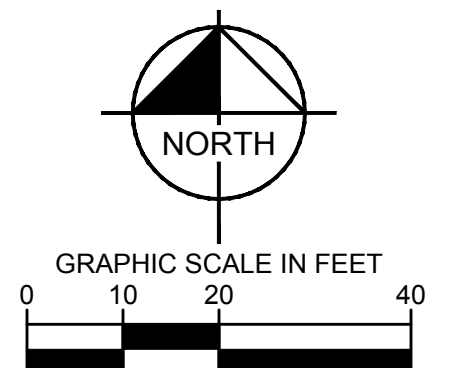
**PARKING LOT TREES**  
 REQUIRED: 1 EVERY 10 SPACES  
 77 PARKING SPACES = 8 TREES  
 PROPOSED: 8 TREES

**TOTAL LANDSCAPE AREA: 9,656 SF**

I HAVE COMPLIED WITH THE CRITERIA OF THE ORDINANCE AB-1881 AND APPLIED THEM FOR THE EFFICIENT USE OF WATER IN THE LANDSCAPE DESIGN PLAN.

COREY R. CAMERON, LLA 6625

**IRRIGATION NOTE:**  
 AN AUTOMATIC IRRIGATION SYSTEM SHALL BE INSTALLED TO PROVIDE 100% COVERAGE FOR ALL PLANTING AREAS SHOWN ON THE PLAN. THE WATER SUPPLY FOR THIS SITE IS A POTABLE WATER CONNECTION AND A DEDICATED IRRIGATION METER WILL BE PROVIDED. LOW VOLUME EQUIPMENT SHALL PROVIDE SUFFICIENT WATER FOR PLANT GROWTH WITH NO WATER LOSS DUE TO WATER CONTROLLERS, AND OTHER NECESSARY IRRIGATION EQUIPMENT. ALL POINT SOURCE SYSTEM SHALL BE ADEQUATELY FILTERED AND REGULATED PER THE MANUFACTURER'S RECOMMENDED DESIGN PARAMETERS. ALL IRRIGATION IMPROVEMENTS SHALL FOLLOW THE GUIDELINES SET FORTH BY THE CITY OF XXXXX MUNICIPAL CODE.



No.	REVISIONS	DATE	BY

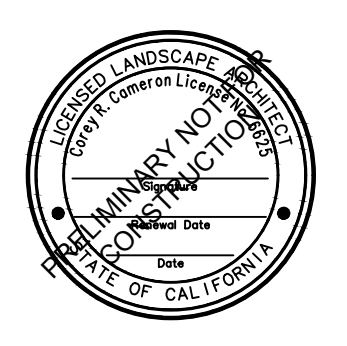
**Kimley»Horn**

© 2023 KIMLEY-HORN AND ASSOCIATES, INC.  
 401 B STREET, SUITE 600; SAN DIEGO, CA 92101  
 PHONE: 619-234-9411  
 WWW.KIMLEY-HORN.COM

KHA PROJECT PROJ #	
DATE	3/10/2023
SCALE	AS SHOWN
DESIGNED BY	MA
DRAWN BY	MA
CHECKED BY	EB

**PRELIMINARY PLANS**  
 PREPARED FOR  
**KRISPY KREME**

CITY OF LA HABRA CA



**PRELIMINARY LANDSCAPE PLAN**

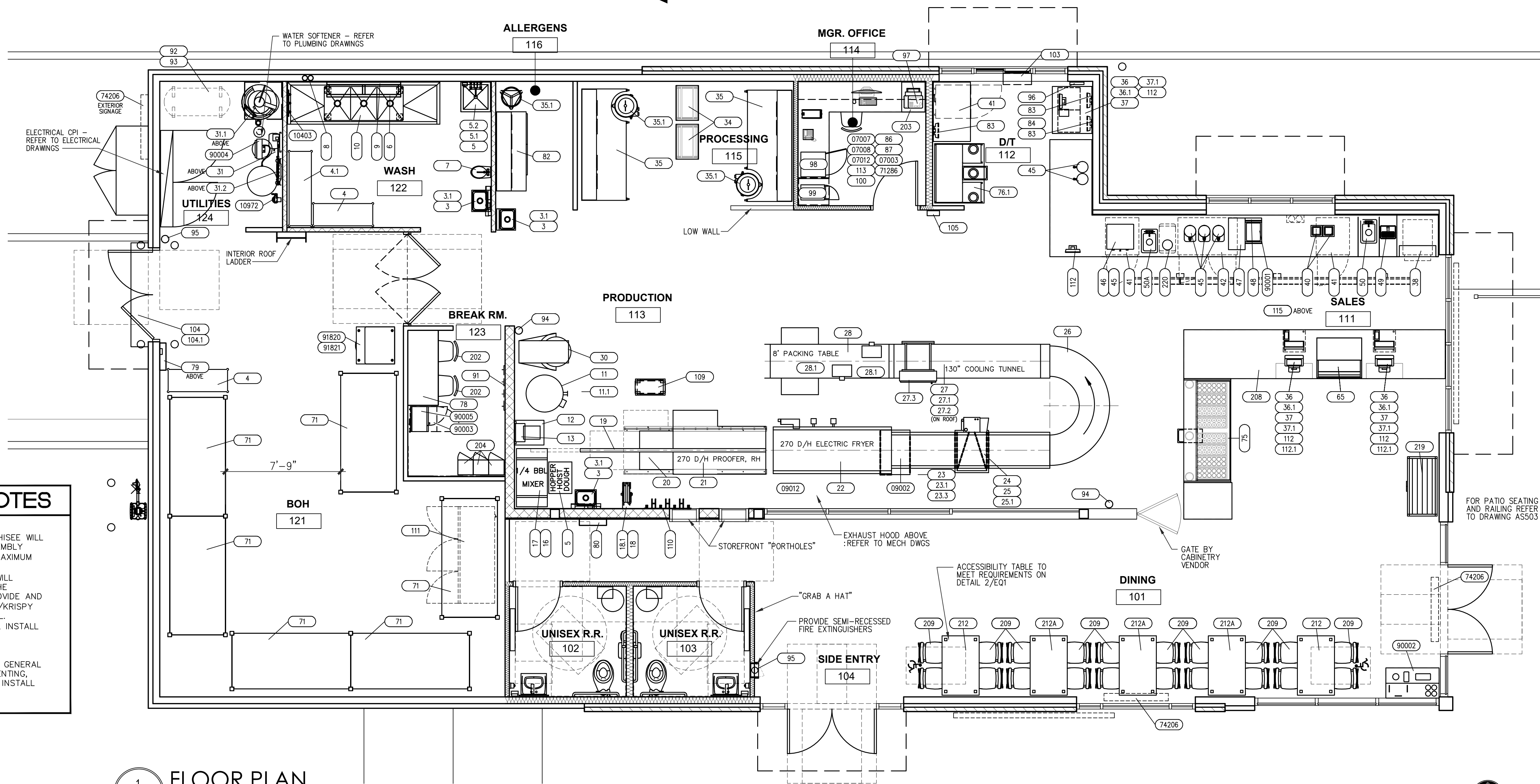
SHEET NUMBER  
**4 OF 4**

PRELIMINARY  
 NOT FOR  
 CONSTRUCTION

Revisions

THESE DRAWINGS & SPECIFICATIONS ARE THE PROPERTY OF NRD AND ARE NOT TO BE REPRODUCED, COPIED, OR Duplicated WITHOUT PRIOR WRITTEN CONSENT. ANY DISCLOSURE OF PROPRIETARY INFORMATION OR DESIGN SHALL BE SUBJECT TO LEGAL ACTION AND DAMAGES.

AWESOME DOUGHNUT, LLC  
 BDA KRISPY KREME DOUGHNUTS  
 4760 E LOS COYOTES DIAGONAL  
 LONG BEACH, CA 90815  
 ROGER CLUCKMAN - OFFICE: 213-489-2340x107  
 Project location  
**1201 WEST IMPERIAL HIGHWAY**  
**LA HABRA, CA 90631**  
**DOUGHNUTS**  
 SHEET DATA  
**EQUIPMENT PLAN**  
 Date: 06/28/2021  
 Drawn By: MTP  
 Checked by: CW  
 Sheet No. Q101



1 FLOOR PLAN  
 Q101 SCALE: 1/4" = 1'-0"

OCCUPANCY LOAD BY SEAT COUNT		
TABLE SIZE	QUANTITY	SEAT
4 TOP TABLE	3	12
4 TOP HANDICAP TABLE	2	8
TABLE TOTAL	6	20
EMPLOYEES		12
QUEING		13
TOTAL:		45

**EQUIPMENT INSTALLATION NOTES**

**PRODUCTION ROOM-**  
 KRISPY KREME DOUGHNUT CORPORATION (KKDC)/KRISPY KREME FRANCHISEE WILL PROVIDE ALL DOUGHNUT EQUIPMENT ALONG WITH UNLOADING AND ASSEMBLY (GENERAL CONTRACTOR WILL PROVIDE 2 HELPERS TO UNLOAD FOR A MAXIMUM OF 4 HOURS). GENERAL CONTRACTOR WILL PROVIDE ELECTRICIANS AND PLUMBERS TO MAKE CONNECTIONS. KKDC/KRISPY KREME FRANCHISEE WILL PROVIDE EXHAUST HOOD AND FANS WITH INSTALLED ANSUL SYSTEM. THE MECHANICAL CONTRACTOR WILL INSTALL THE HOOD AND FANS AND PROVIDE AND INSTALL ALL DUCT WORK. ELECTRICIAN WILL MAKE CONNECTIONS. KKDC/KRISPY KREME FRANCHISEE WILL PROVIDE MIX SINK AND PLUMBER WITH INSTALL. KKDC/KRISPY KREME FRANCHISEE WILL FURNISH AND CONTRACTOR WILL INSTALL STEAM HOOD OVER GLAZE COOKER.

**WASHROOM-**  
 KKDC/KRISPY KREME FRANCHISEE WILL PROVIDE 3 COMPARTMENT SINK. GENERAL CONTRACTOR WILL UNLOAD, SET IN PLACE, ASSEMBLE, AND PROVIDE VENTING, PLUMBING, AND ELECTRICAL CONNECTIONS. GENERAL CONTRACTOR WILL INSTALL POT RACK AND CUTTER RACKS ON WALL.

**NEW KITCHEN EQUIPMENT SCHEDULE - ABBREVIATED**

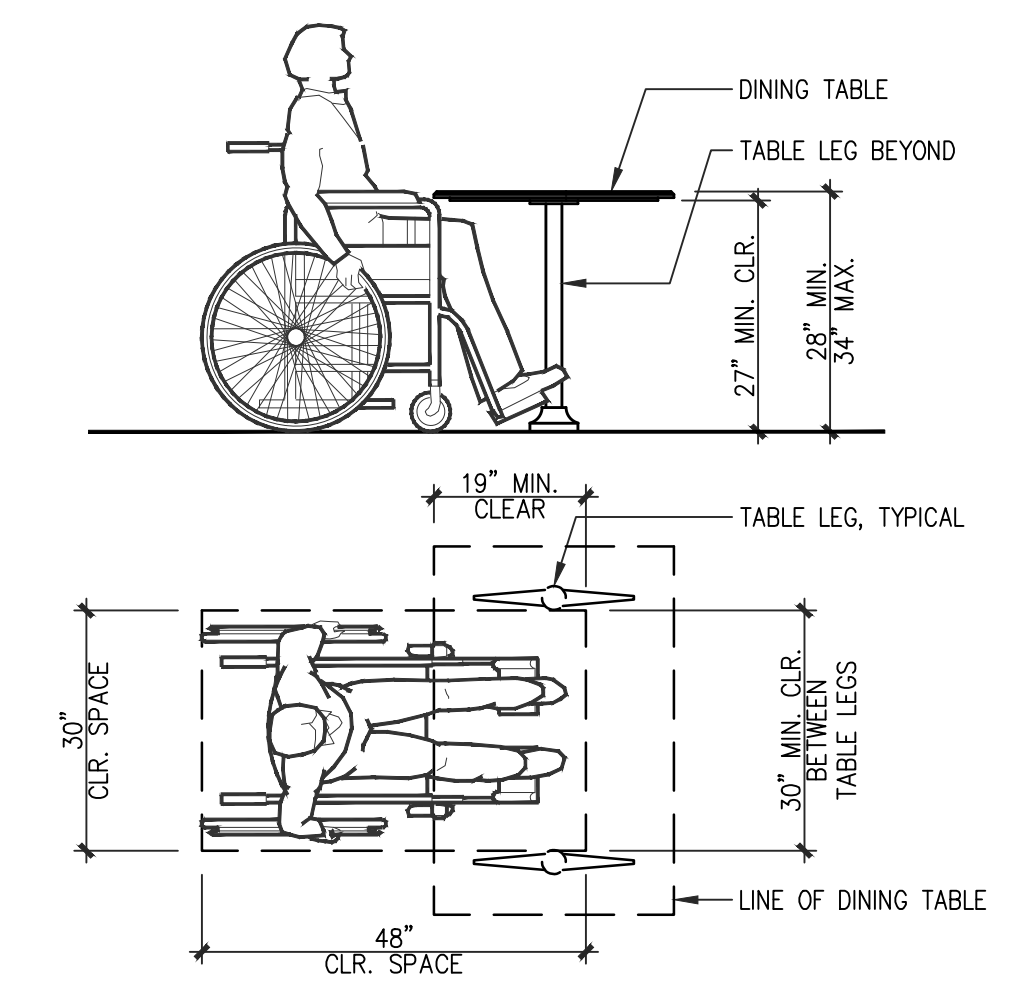
ITEM	QTY.	DESCRIPTION	MFGR.	ITEM	QTY.	DESCRIPTION	MFGR.	ITEM	QTY.	DESCRIPTION	MFGR.	ITEM	QTY.	DESCRIPTION	MFGR.
3	3	HANDSINK,FAUCET	EAGLE GROUP	25	1	GLAZE TANK W/PUMP	KK - EQUIPMENT	49	1	STEAMING PITCHER RINSER	PRIMA	105	1	EMPLOYEE TIMECLOCK	KRONOS
3.1	3	SOAP, SANITIZER AND TONEL DISPENSERS	BY OWNER	25.1	1	GLAZE TANK HEATER	KK - EQUIPMENT	50	1	DUMP SINK W/ FAUCET	EQUIP. FAB/T&S BRASS	109	1	INGREDIENT BAG RACK	KK-EQUIPMENT
4	2	METRO SHELF 48x18	METRO	26	1	180 CURVE ASSEMBLY	KK - EQUIPMENT	50A	1	HAND SINK W/ FAUCET	EQUIP. FAB/T&S BRASS	110	1	BELSHAW COMPONET HOLDER	KK
4.1	1	METRO SHELF 60x18	METRO	27	1	130" COOLING TUNNEL	KK - EQUIPMENT	65	1	COOLER-REACH IN	STRUCTURAL CONCEPTS	111	1	REACH-IN REFRIGERATOR 3 DOOR	HOSHIZAKI
5	2	MOP SINK BSN	ADVANCE TABCO	27.1	1	130" COOLING TUNNEL FAN	KK - EQUIPMENT	71	6	STORAGE RACK (144" LENGTH)	HUSKY RACK & WIRE	112	4	POS MONITOR	RADIANT
5.1	1	MOP SINK FAUCET	ADVANCE TABCO	27.2	1	C/T CONDENSING UNIT	KK - EQUIPMENT	75	1	DOUGHNUT DISPLAY CASE	FRANKE	112.1	2	INTERACTIVE CUSTOMER DISPLAY	RADIANT
5.2	1	MOP HANGER	ADVANCE TABCO	27.3	1	SYSTEM CONTROL PANEL 270 D/H	KK - EQUIPMENT	76.1	1	4'-0" PICKING STATION	KK-F.F.E.	113	1	IT RACK	KENDALL HOWARD
6	1	WALL MOUNTED POT RACK	AERO	28	1	8' PACKING TABLE	KK - EQUIPMENT	78	1	EMPLOYEE BREAK TABLE	ADVANCE TABCO	115	5	49" DIGITAL INTERIOR MENU BOARD	SAMSUNG
7	1	EYE WASH STATION	SEE PLUMBING	28.1	2	FILLING MACHINE	EDHARD	79	1	BUG LIGHT 8FOH	BY OWNER	202	2	OFFICE CHAIR	BY OWNER
8	1	CUTTER/HOPPER HOLDER		30	1	VARI-MIXER MIXER	KK - EQUIP./ VARI-MIXER	80	1	BUG LIGHT 8FOH	GILBERT	203	1	FILING CABINET	SCHWAB
9	1	PURITAN/CHURCHHILL SOAP DISP.	KK-FFE	31	1	WATER FILTER SYSTEM	3M	82	1	ALLERGEN TABLE 64"x36"W	KK - FFE	204	3	EMPLOYEE LOCKERS	BY OWNER
10	1	THREE COMPARTMENT SINK	OWNER VENDOR	31.1	1	20 GAL WATER FILTER SYSTEM TANK	3M	83	3	MONITOR (ORDER REPEATERS)	CHEF	208	1	FRONT CASHIER COUNTER	BY VENDOR
11	1	GLAZE COOKER	KK-EQUIPMENT/ GROEN	31.2	1	BOOSTER PUMP	MCCAANS	84	1	CONTROLLER WITH BUMP BAR	RADIANT	209	20	DINING CHAIR	BY VENDOR
11.1	1	GLAZE KETTLE HOOD & FAN	CAPTIVE AIR	34	1	BUN PAN RACK, MOBIE	CHOICE	86	1	BACK OFFICE PC UNIT	KK-FFE	212	2	24"x48" ADA TABLE	BY VENDOR
12	1	SCALE/ WATER FRAME	KK - EQUIPMENT	35	2	WORK TABLE 96"x30"	FRANKE	87	1	DESKTOP MONITOR	KK-FFE	212A	3	24"x48" TABLE	BY VENDOR
13	1	WATER METER	KK - EQUIPMENT	35.1	3	HAND ICING MACHINE	KK - EQUIPMENT	91	1	EMPLOYEE COAT HOOKS	BY OWNER	219	1	MERCHANDISE SHELVES	BY VENDOR
16	1	WATER CHILLER FOR MIXER	KK - EQUIPMENT	36	3	POS PRINTER	EPSON	92	1	AIR COMPRESSOR 20 GALLON	SPEED AIR	220	1	WASTE RECEPTACLE	BY VENDOR
17	1	1/4 BBL MIXER	KK - EQUIPMENT	36.1	3	BATTERY BACK-UP	APC BACK-UPS	93	1	DIRECT ACTING ELEC. DRAIN VALVE	SPEEDAIRE	07003	1	WORK DESK	CUSTOM
18	1	HOSE REEL	REEL CRAFT	37	4	CASH DRAWER	RADIANT	94	2	FIRE EXTINGUISHER	K CLASS	07007	1	INTEGRATED AMPLIFIER	TOA
18.1	1	25' CLEAN UP HOSE	KK-EQUIPMENT	37.1	3	LOCKBOX	KK-FFE	95	2	FIRE EXTINGUISHER	ABC CLASS	07008	1	SECURITY SYSTEM	DDT
19	1	HOIST ASSEMBLY ABOVE	KK - EQUIPMENT	38	1	ICE CUBER WITH BIN	HOSHIZAKI	96	1	D/T 5 HEADSET SYSTEM	3M	07012	1	WALL MOUNTED TV/VCR	BY OWNER
20	1	EXTRUDER	KK - EQUIPMENT	40	2	ON THE COUNTER BLENDER	VITAMIX	97	1	COPIER-FAX MACHINE	HICOH	09002	1	SHORTENING TANK	KK - EQUIPMENT
21	1	270 D/H PROOFER	KK - EQUIPMENT	41	3	UNDER COUNTER REFRIGERATOR	HOSHIZAKI	98	1	SAFE	LOOMIS	09012	1	F-MACHINE	KK - EQUIPMENT
22	1	270 D/H ELECTRIC FRYER	KK - EQUIPMENT	42	1	UNDER COUNTER REFRIGERATOR	HOSHIZAKI	99	1	SAFE	FIREKING SECURITY GROUP	10403	1	CAKE CUTTER RACK	KK
23	1	EXHAUST SYSTEM	CAPTIVE AIR	45	8	COFFEE URNS	BUNN	100	1	EZE CONTROLLER	EZE SYSTEMS	10972	1	F MACHINE STORAGE BRACKET	KK
23.1	1	FIRE SUPPRESSION SYSTEM	CAPTIVE AIR	46	1	COFFEE BREWER	BUNN	103	1	DT AIR CURTAIN	READY ACCESS	71286	1	MUSIC PLAYBACK PLAYER	MUZAK MUSIC SYSTEM
23.3	1	ROOFTOP FAN PACKAGE	CAPTIVE AIR	47	1	ESPRESSO MACHINE	FRANKE	104	1	AIR CURTAIN	BERNER	74206	3	"HOT NOW" INTERIOR SIGNAGE	
24	1	270 D/H GLAZER	KK - EQUIPMENT	48	1	ESPRESSO MACHINE FILTER	3M	104.1	1	OVERHEAD TRACK MOUNT CONTACTS	TANE ALARM PRODUCTS	90001	1	SURE SHOT SYSTEM	BY OWNER

**SEATING**

	TABLE	SEATS
4 TOP SEATING	6	24
TOTAL:	6	24

REQUIRED NUMBER OF ACCESSIBLE SEATING 24x0.05= 1.2 (4 PROVIDED)

**BUILDING AREA:**  
 GROSS BUILDING SQ. FOOTAGE (TO FACE OF EXTERIOR FINISHES):  
 3,590 S.F.



2 WHEELCHAIR @ DIN. TABLE  
 EQ1 SCALE: 1/2" = 1'-0"



PRELIMINARY  
NOT FOR  
CONSTRUCTION

Revisions

THESE DRAWINGS & SPECIFICATIONS ARE THE PROPERTY OF NRD ARCHITECTS & ENGINEERS. ANY REPRODUCTION, IN WHOLE OR IN PART, WITHOUT WRITTEN CONSENT OF NRD ARCHITECTS & ENGINEERS IS STRICTLY PROHIBITED. NRD ARCHITECTS & ENGINEERS SHALL BE RESPONSIBLE TO THE CLIENT FOR ANY ERRORS, OMISSIONS, AND DAMAGES.

**AWESOME DOUGHNUT, LLC**  
**BDA KRISPY KREME DOUGHNUTS**  
4760 E. LOS COYOTES DIAGONAL  
LONG BEACH, CA 90815  
ROGER CLICKMAN - OFFICE: 213-489-2340/4107  
Project location  
**1201 WEST IMPERIAL HIGHWAY**  
**LA HABRA, CA 90631**

**Krispy Kreme**  
DOUGHNUTS  
SHEET DATA  
EXTERIOR ELEVATIONS

Date 06/28/2021

Drawn by MTP

Checked by TMD

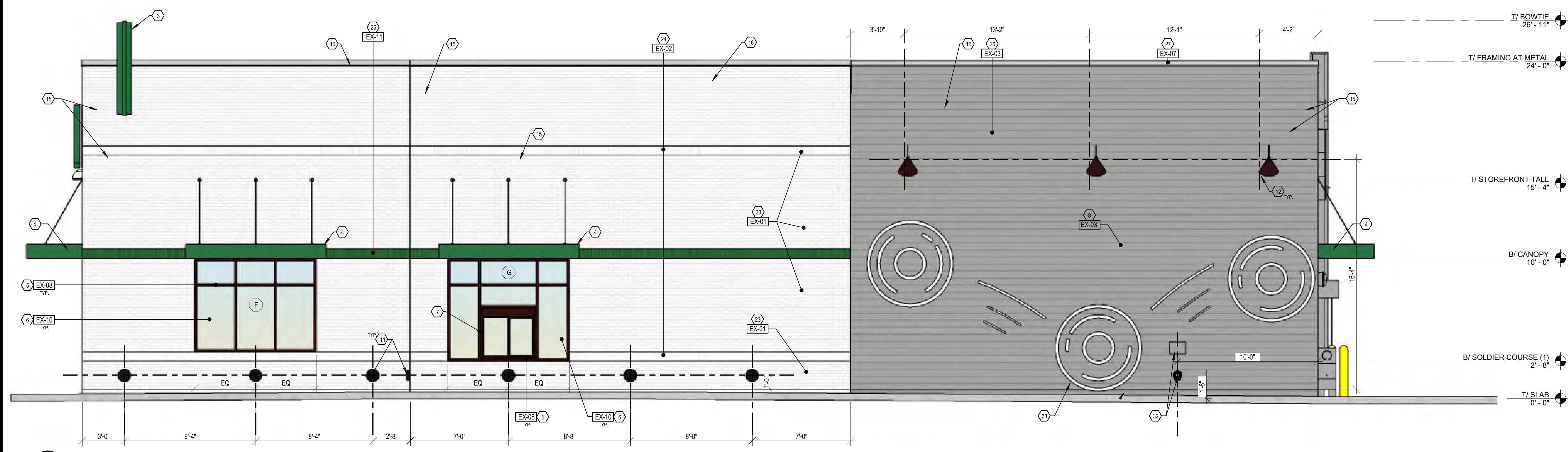
Sheet No. A202

**GENERAL NOTES**

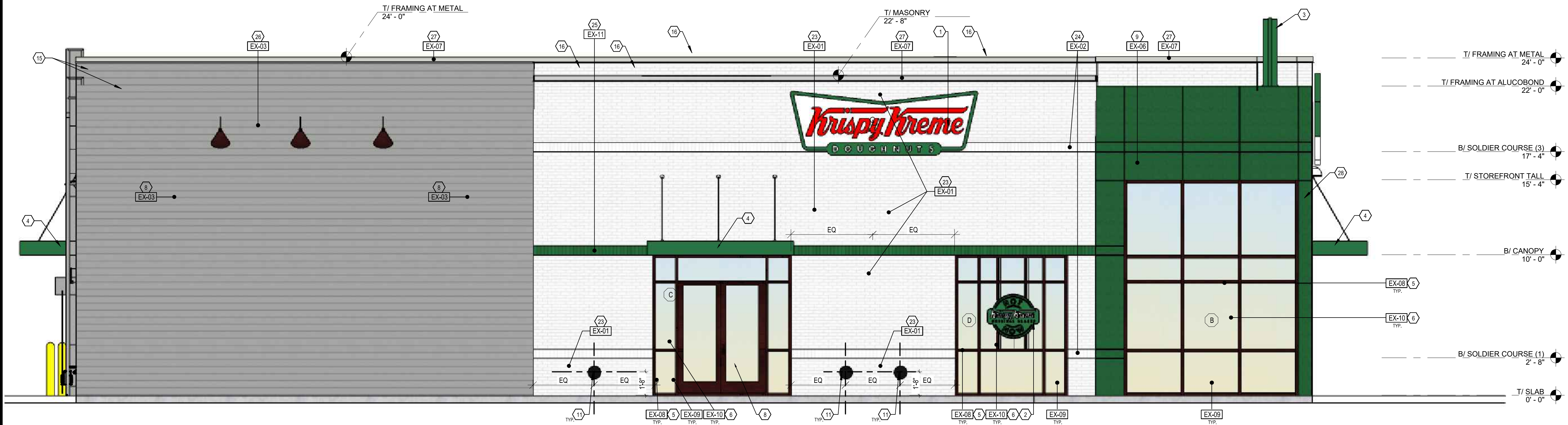
- A. FOR REFLECTED CEILING PLAN, SEE DWGS A111 & A112.
- B. FOR DOOR SCHEDULE, SEE DWG A601.
- C. FOR WINDOW SCHEDULE, SEE DWG 602.
- D. FOR EQUIPMENT, SEE DWG Q101.
- E. NEW WALL COVERING GRAPHICS BY OWNER'S VENDOR, G.C. SHALL PREPARE WALLS AS REQUIRED TO A SMOOTH SURFACE AND PRIME PER MANUFACTURER'S SPECIFICATIONS.

**ELEVATION KEYED NOTES**

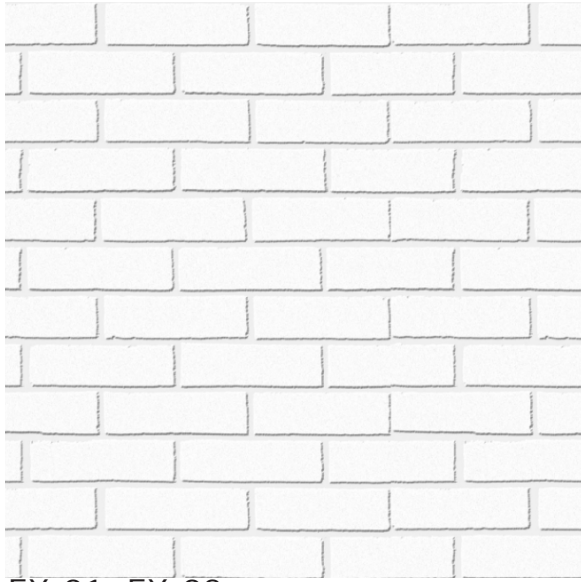
- 1 EXTERIOR WALL SIGNAGE PROVIDED BY OWNER'S SIGNAGE VENDOR. GC TO COORDINATE W/ VENDOR TO PROVIDE BLOCKING AT EXTERIOR WALL FRAMING, AS REQUIRED. EC TO COORDINATE W/ VENDOR FOR SPECIFIC ELECTRICAL ROUGH-IN LOCATIONS. SIGNAGE SUBMITTED UNDER SEPARATE PERMIT.
- 2 INTERIOR WINDOW SIGNAGE BY OWNER'S SIGNAGE VENDOR - UNDER SEPARATE CONTRACT & PERMIT.
- 3 ARCHITECTURAL BOW-TIE ELEMENT BY OWNER'S SIGNAGE VENDOR. VENDOR TO FURNISH/INSTALL. GC TO FURNISH/INSTALL SUPPORT FRAMING PRIOR TO VENDOR INSTALLATION; REFER TO STRUCTURAL DRAWINGS FOR ADDITIONAL INFORMATION.
- 4 PREFABRICATED CANOPY W/ INTEGRATED LIGHTING BY OWNER'S SIGNAGE VENDOR. GC TO COORDINATE W/ VENDOR TO PROVIDE BLOCKING AT EXTERIOR WALL FRAMING, AS REQUIRED. EC TO COORDINATE W/ VENDOR FOR SPECIFIC ELECTRICAL ROUGH-IN LOCATIONS FOR CANOPY LIGHTS.
- 5 CURTAIN WALL SYSTEM BY GC. REFER TO WINDOW SCHEDULE ON A602 & EXTERIOR FINISH SCHEDULE ON A201 FOR ADDITIONAL INFORMATION.
- 6 1" TEMPERED SAFETY GLAZING PER WINDOW SCHEDULE & EXTERIOR FINISH SCHEDULE AT ALL EXTERIOR CURTAIN WALLS, TYP.
- 7 DRIVE-THRU WINDOW, FINISHED TO MATCH ADJACENT CURTAIN WALL - REFER TO WINDOW SCHEDULE ON A602 FOR ADDITIONAL INFORMATION. GC TO PROVIDE ALL FLASHING & SEALANT AS REQUIRED FOR WEATHERTIGHT INSTALLATION.
- 8 EXTERIOR DOOR - REFER TO DOOR SCHEDULE ON A601 FOR ADDITIONAL INFORMATION.
- 9 NOT USED.
- 10 REAR DOOR AT STORAGE - PROVIDE 180° VIEWER IN DOOR & DOORBELL AT LATCH SIDE OF DOOR; REFER TO DOOR SCHEDULE ON A601 FOR ADDITIONAL INFORMATION.
- 11 EXTERIOR DECORATIVE BACK-LIT WALL SCENCE - REFER TO ELECTRICAL PLANS FOR ADDITIONAL INFORMATION.
- 12 EXTERIOR DECORATIVE GOOSENECK LIGHT FIXTURE - REFER TO ELECTRICAL PLANS FOR ADDITIONAL INFORMATION.
- 13 EXTERIOR EMERGENCY EGRESS LIGHT - REFER TO ELECTRICAL PLANS FOR ADDITIONAL INFORMATION.
- 14 EXTERIOR AREA/SITE SECURITY WALL PACK LIGHT FIXTURE - REFER TO ELECTRICAL PLANS FOR ADDITIONAL INFORMATION.
- 15 DASHED LINES REPRESENT ROOF LINES/PARAPETS BEYOND.
- 16 ROOFTOP MECHANICAL EQUIPMENT - REFER TO MECHANICAL PLANS FOR ADDITIONAL INFORMATION.
- 17 EXTERIOR WALL-MOUNTED AIR CURTAIN - REFER TO MECHANICAL PLANS FOR ADDITIONAL INFORMATION.
- 18 NOT USED.
- 19 BOLLARD - REFER TO ARCHITECTURAL SITE SHEETS FOR BOLLARD DETAIL.
- 20 EXTERIOR FROST PROOF HOSE BIB; REFER TO PLUMBING SHEETS FOR ADDITIONAL INFORMATION.
- 21 ELECTRICAL SERVICE EQUIPMENT - VERIFY EXACT SIZE IN-FIELD. GC TO PROVIDE CONTINUOUS WEATHER SEALANT AT ALL PENETRATIONS INTO BUILDING.
- 22 GAS METER & RISER - REFER TO PLUMBING PLANS FOR MORE INFORMATION.
- 23 BRICK VENEER - ALL MORTAR JOINTS TO BE 3/8" CONCAVE, UNO. PROVIDE EXPANSION JOINTS EVERY 20'-0", MIN; EXTEND ALL EXPANSION JOINTS FROM BASE OF VENEER TO TOP OF BRICKWORK AT PARAPETS.
- 24 BRICK ACCENT SOLDIER COURSE W/ SOLID UNITS AT CORNERS
- 25 GLAZED BRICK ACCENT SOLDIER COURSE W/ SOLID UNITS AT CORNERS
- 26 CORRUGATED METAL SIDING - GC TO SEAM PER MANUFACTURER INSTALLATION INSTRUCTIONS; REFER TO DETAILS ON SHEET A504.
- 27 METAL COPING - REFER TO EXTERIOR FINISH SCHEDULE
- 28 GC TO WRAP COLUMN AT CURTAIN WALL CORNER W/ BRAKE METAL FINISH TO MATCH CURTAIN WALL STOREFRONT FINISH. REFER TO DETAIL SHEETS FOR ADDITIONAL INFORMATION.
- 29 ALL EXTERIOR METALS & UTILITY SERVICE EQUIPMENT/METERS AT REAR OF BUILDING TO BE PAINTED EX-04, UNO.
- 30 KNOX BOX - VERIFY INSTALLATION REQUIREMENTS PER LOCAL FIRE MARSHAL IF NEEDED.
- 31 ADDRESS NUMBERS TO BE INSTALLED ON CANOPY, CENTERED VERTICALLY BETWEEN CANOPY FLANGES & CENTERED HORIZONTALLY ON EXTERIOR WALL SIGNAGE.
- 32 COW'S TONGUE DOWNSPOUT FOR ROOF SUMP OVERFLOW. GC TO PROVIDE BROWN EXTERIOR-GRADE SIGN ABOVE COW'S TONGUE WITH WHITE ROUTED LETTERS STATING, "IF WATER IS COMING FROM THIS FIXTURE, PLEASE NOTIFY MANAGEMENT" - REFER TO PLUMBING PLANS FOR ADDITIONAL INFORMATION.
- 33 ROUTED ACRYLIC ARTWORK PROVIDED & INSTALLED BY OWNER'S VENDOR.
- 34 ALTERNATE LOCATION OF HOTLIGHT. IF PROJECT DOES NOT HAVE TALL PYLON SIGNAGE WITH HOTLIGHT AND LOCAL CODES ALLOW IT, PROVIDE HOTLIGHT IN THIS LOCATION - GC TO PROVIDE J-BOX AND BLOCKING AS NEEDED IF ALTERNATE HOTLIGHT ACCEPTED
- 35 EXTERIOR WALL-MOUNTED ACCESS POINT, MOUNTED AT 12" BELOW ROOF LINE. SEE ELECTRICAL SHEETS FOR ADDITIONAL INFORMATION.
- 36 8" HIGH CONCRETE LEDGE ONLY ALONG WALL OF DRIVE-THRU WINDOW - REFER TO STRUCTURAL DRAWINGS FOR DETAIL



**1 EAST ELEVATION**  
SCALE: 1/4" = 1'-0"



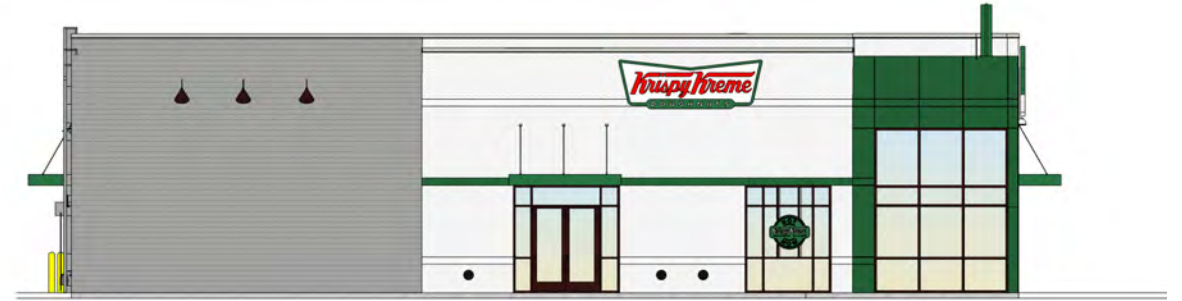
**2 WEST ELEVATION**  
SCALE: 1/4" = 1'-0"



EX-01, EX-02  
BM PURE WHITE OC-84



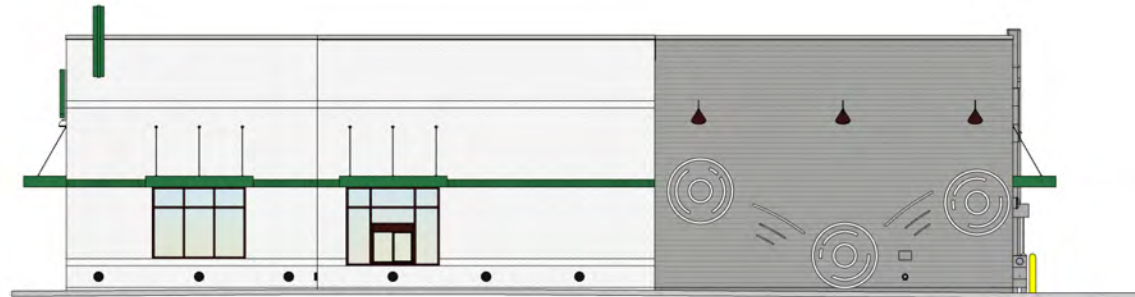
EX-05, EX-06  
PMS 349 C



EX-08  
KAWNEER DARK BRONZE



E-05  
BM STORM AF-700



PRELIMINARY  
 NOT FOR  
 CONSTRUCTION

Revisions

THESE DRAWINGS & SPECIFICATIONS ARE THE PROPERTY OF NRD ARCHITECTS & ENGINEERS. NO PARTS OF THESE DRAWINGS OR SPECIFICATIONS ARE TO BE REPRODUCED, COPIED, OR TRANSMITTED IN ANY FORM OR BY ANY MEANS, ELECTRONIC OR MECHANICAL, INCLUDING PHOTOCOPYING, RECORDING, OR BY ANY INFORMATION STORAGE AND RETRIEVAL SYSTEM, WITHOUT THE WRITTEN CONSENT OF NRD ARCHITECTS & ENGINEERS. ANY UNAUTHORIZED USE OF THESE DRAWINGS OR SPECIFICATIONS SHALL BE AT THE USER'S SOLE RISK AND WITHOUT LIABILITY TO NRD ARCHITECTS & ENGINEERS.

**AWESOME DOUGH-NUT, LLC**  
 BDA KRISPY KREME DOUGHNUTS  
 4760 E. LOS COYOTES DIAGONAL  
 LONG BEACH, CA 90815  
 ROGER CLUCKMAN - OFFICE: 213-489-2340x107  
 Project location  
**1201 WEST IMPERIAL HIGHWAY**  
**LA HABRA, CA 90631**

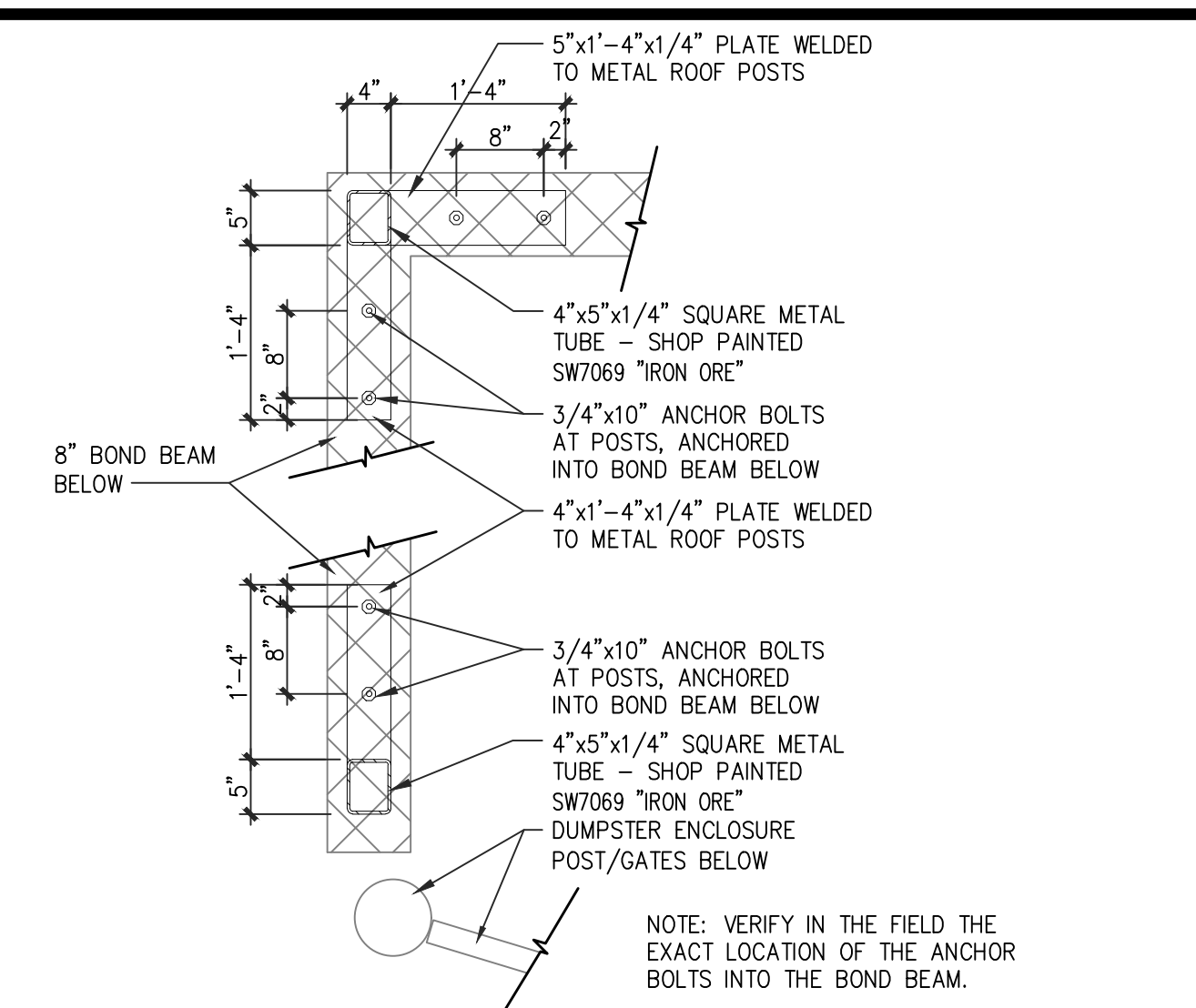
**Krispy Kreme**  
**DOUGHNUTS**  
 SHEET DATA  
**SITE DETAILS**

Date: 06/28/2021

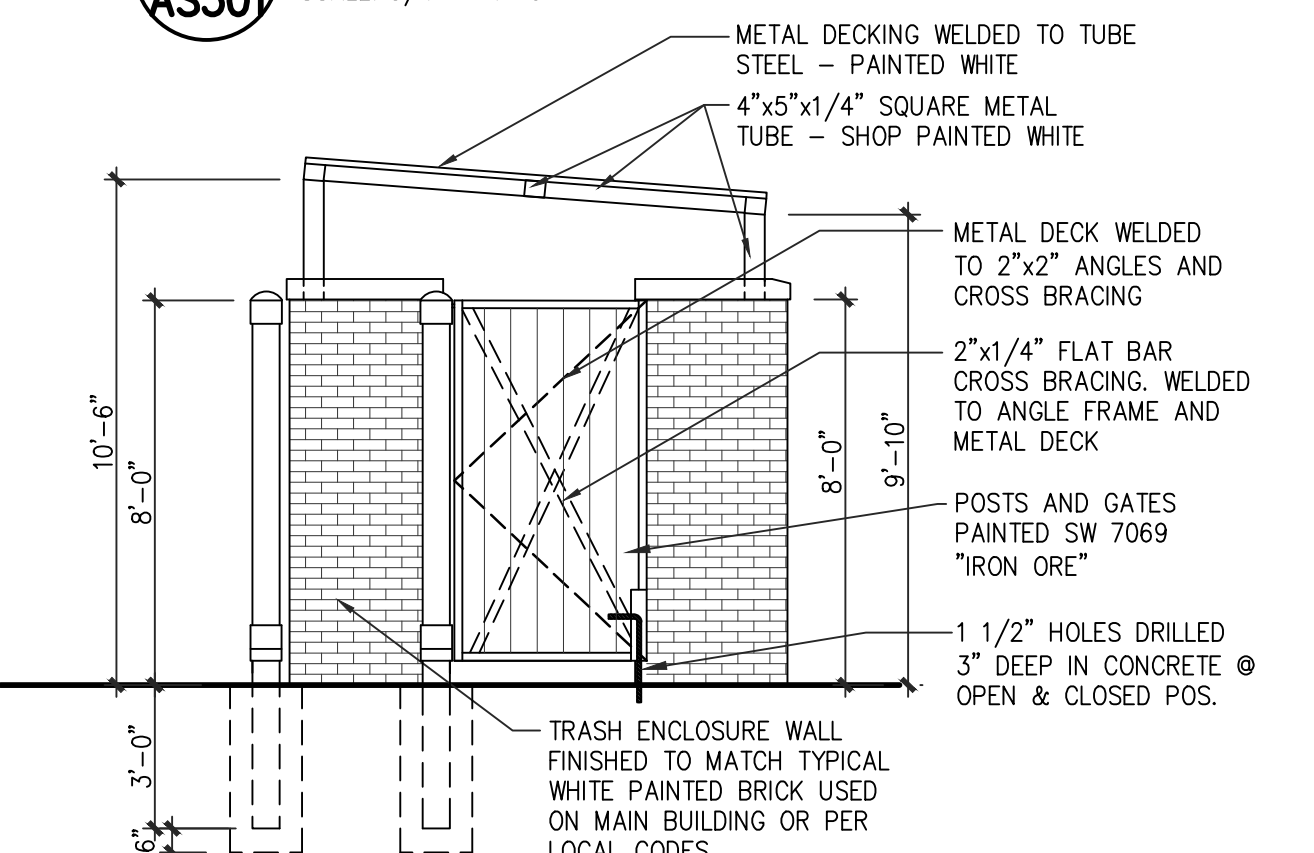
Drawn By: MTP

Checked by: TMD

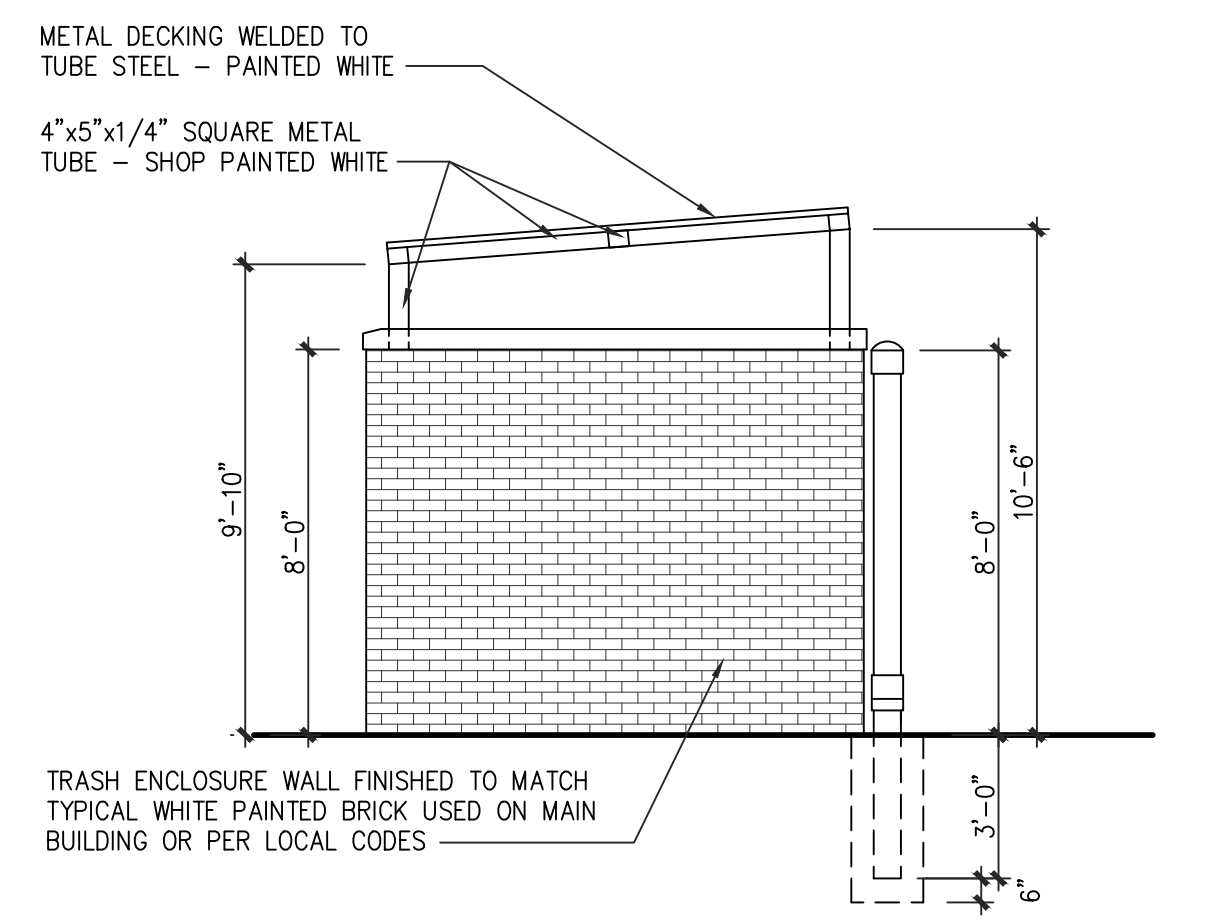
Sheet No. AS502



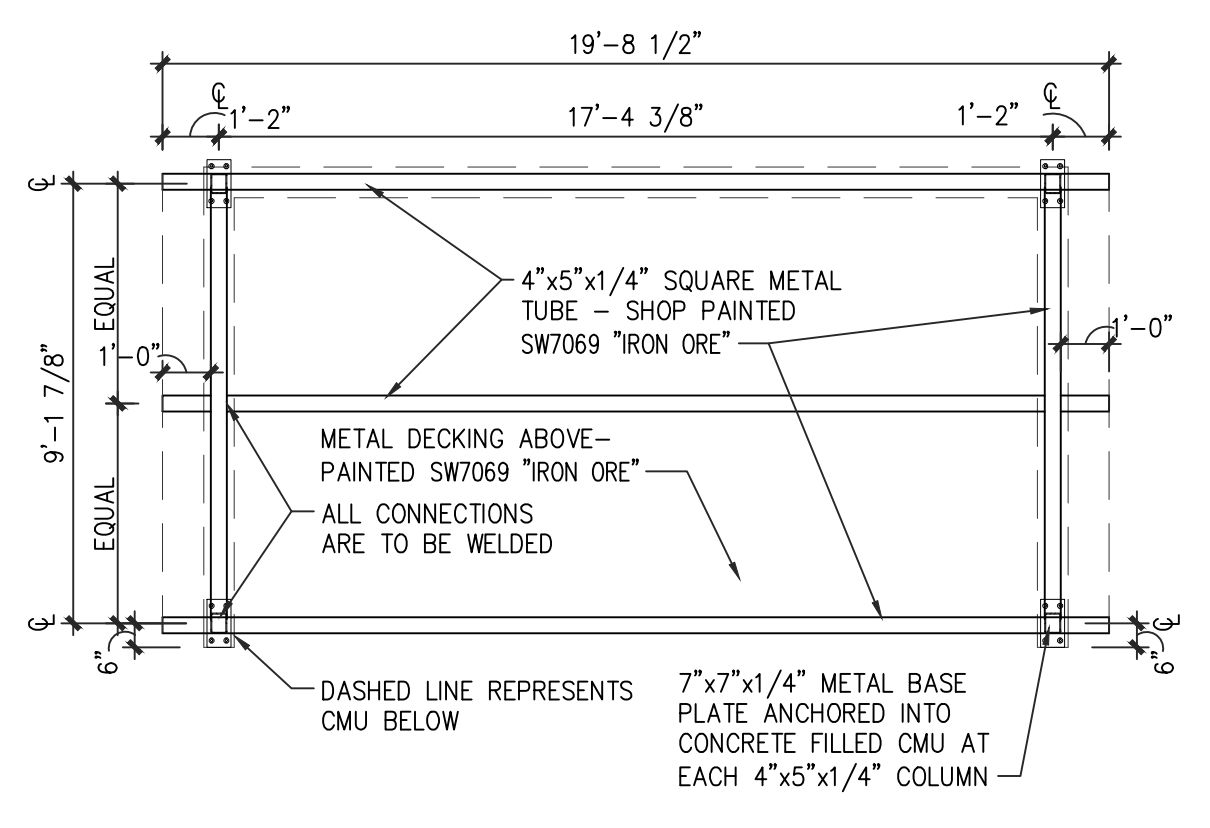
**12 ANCHOR POST PLATE DETAILS**  
 AS501 SCALE: 3/4" = 1'-0"



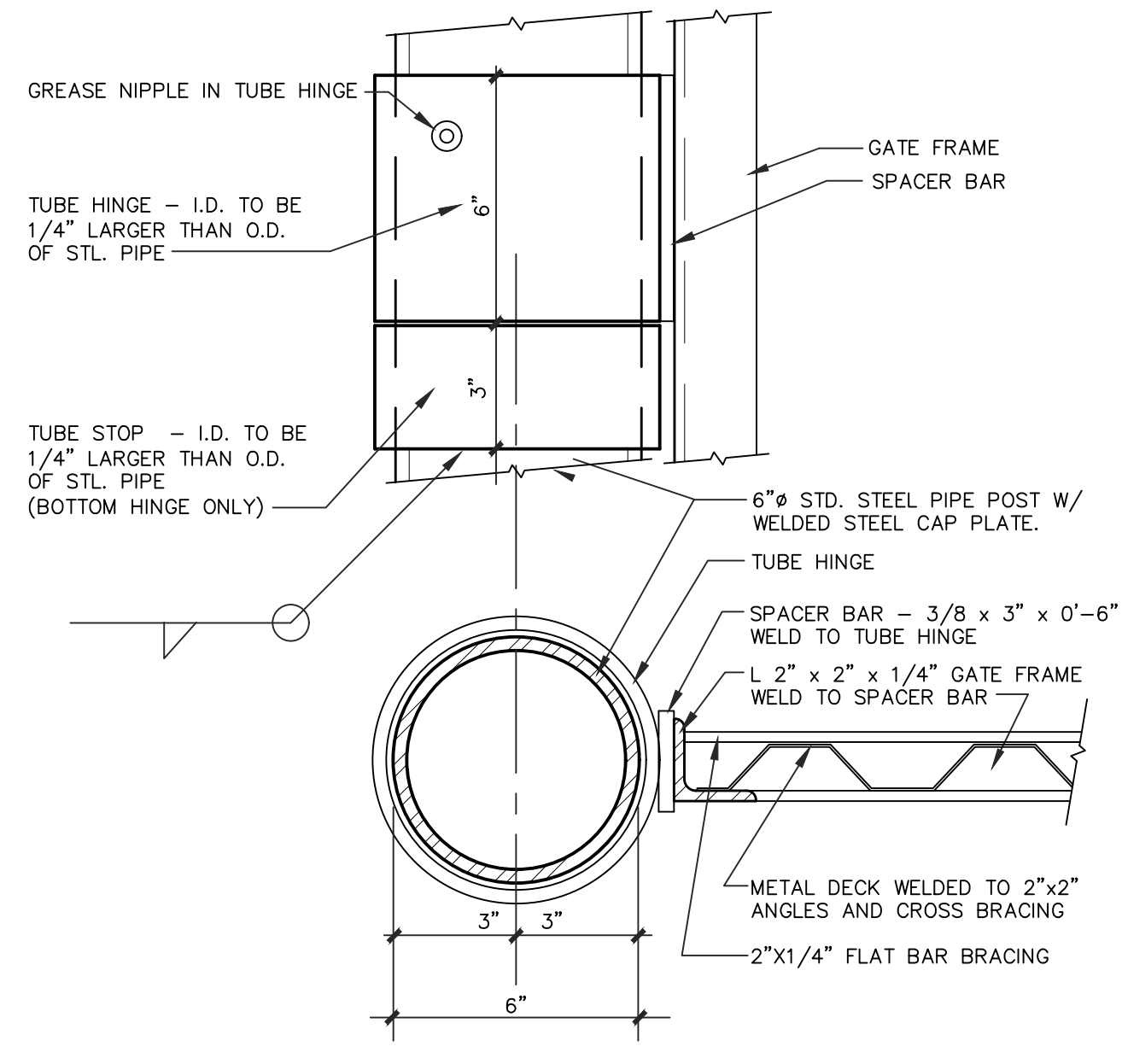
**11 TYP. SIDE ELEVATION**  
 AS502 SCALE: 1/4" = 1'-0"



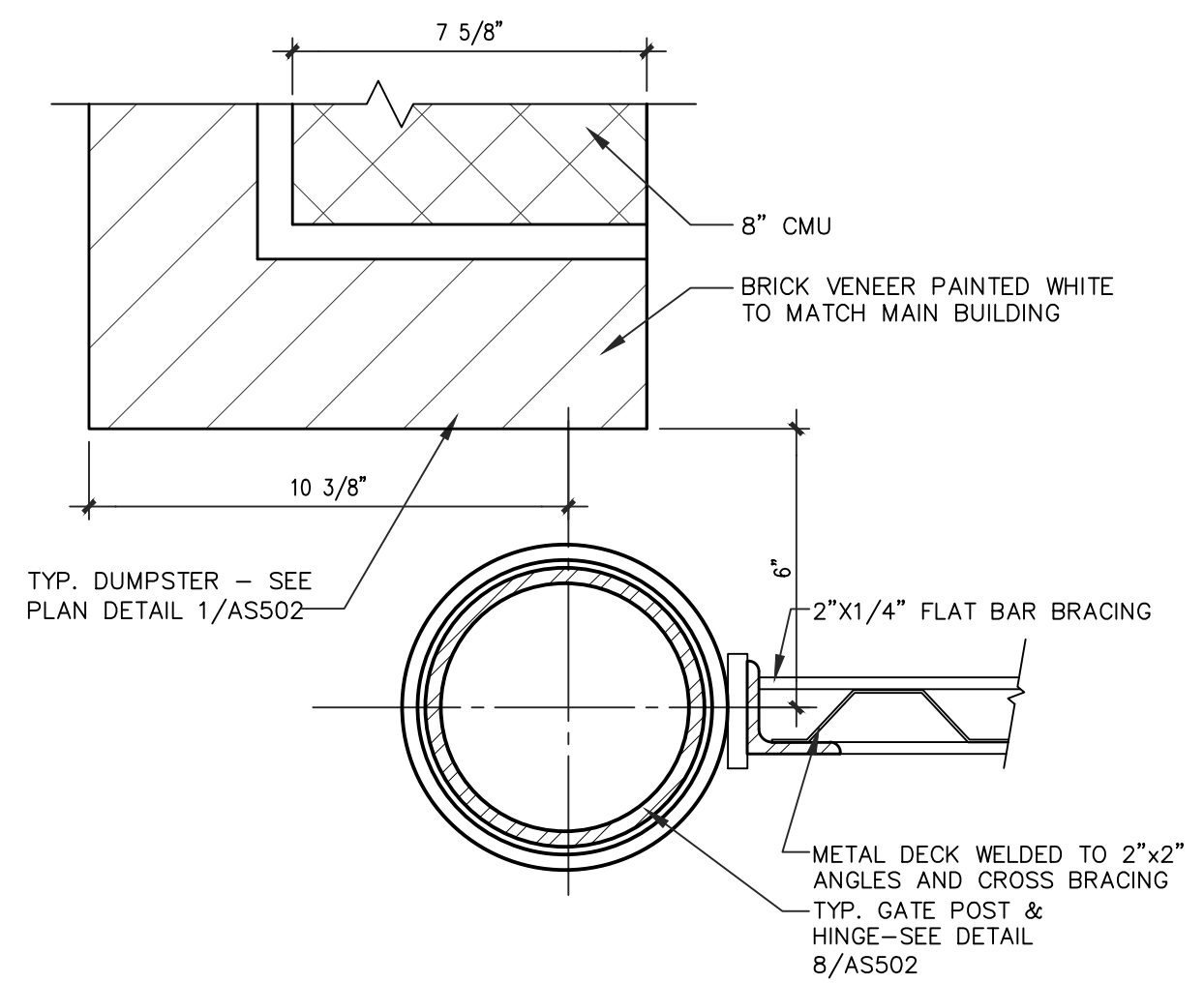
**10 TYP. SIDE ELEVATION**  
 AS502 SCALE: 1/4" = 1'-0"



**9 ENCLOSURE ROOF PLAN**  
 AS502 SCALE: 1/4" = 1'-0"

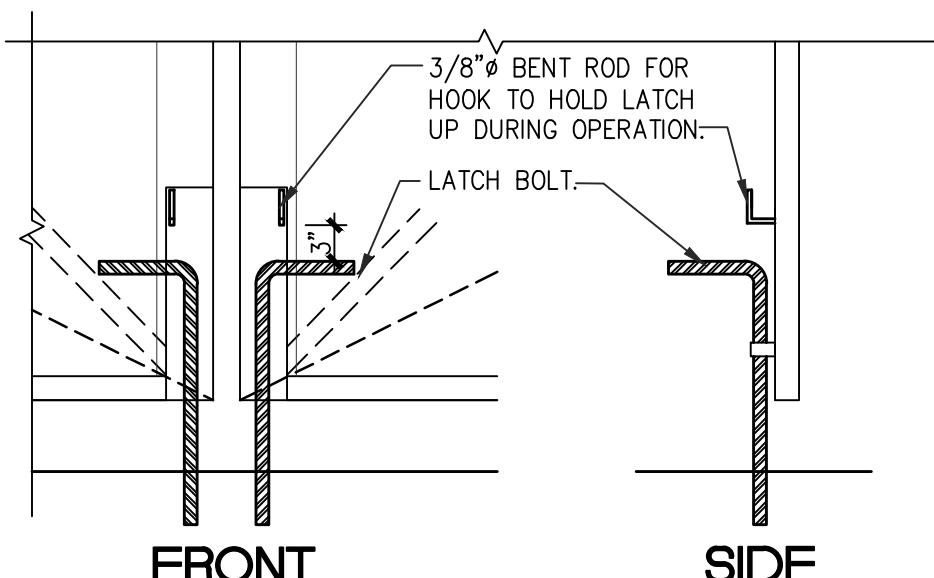


**6 GATE POST HINGE**  
 AS502 SCALE: 3" = 1'-0"

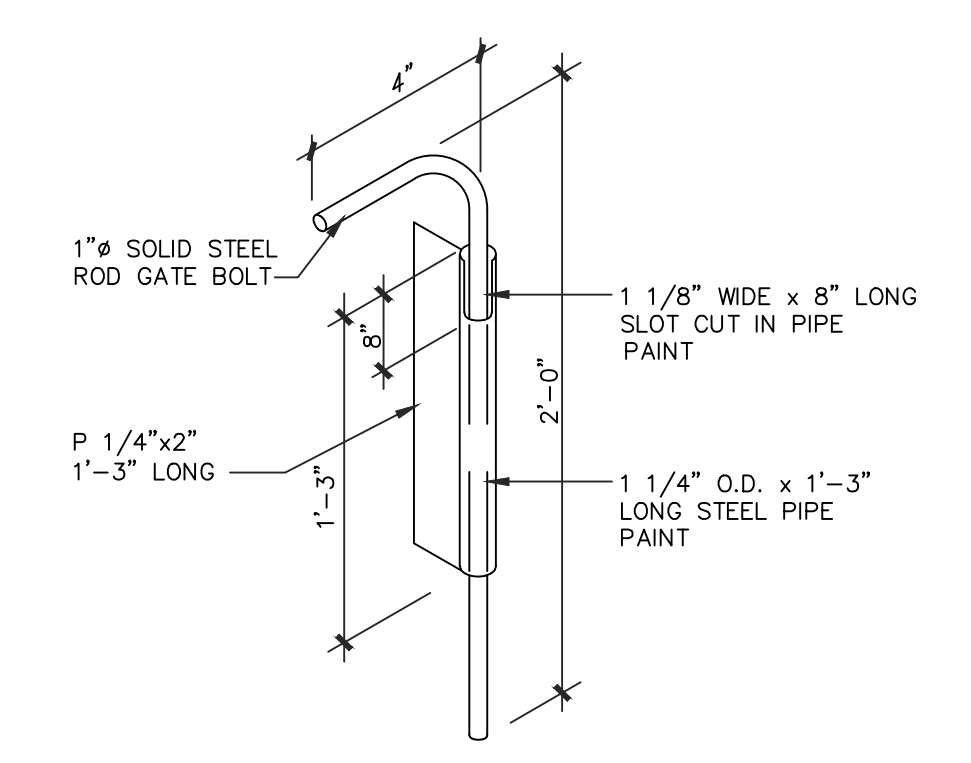


**8 TYPICAL BOLLARD**  
 AS502 SCALE: 1/2" = 1'-0"

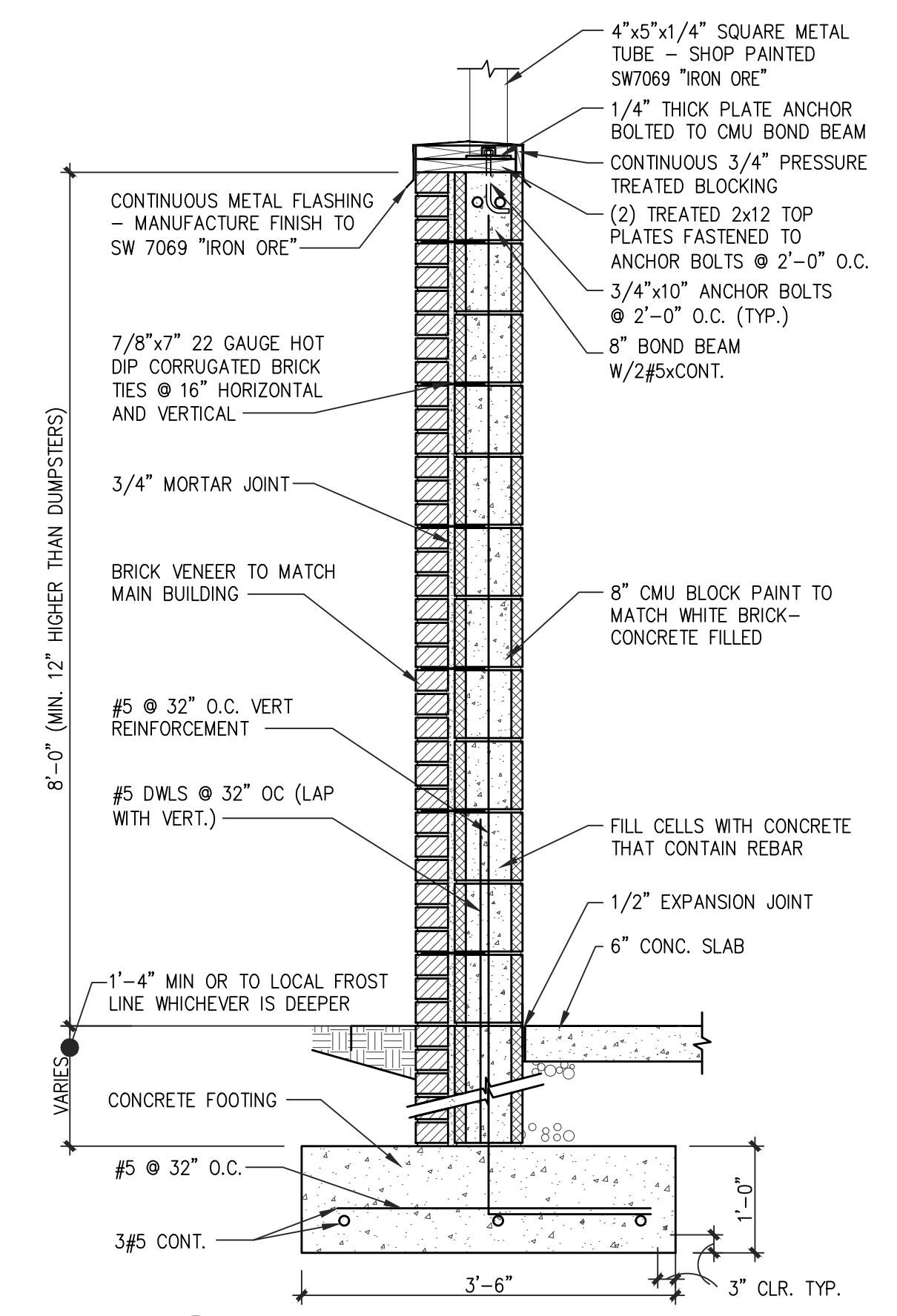
**5 GATE POST**  
 AS502 SCALE: 3" = 1'-0"



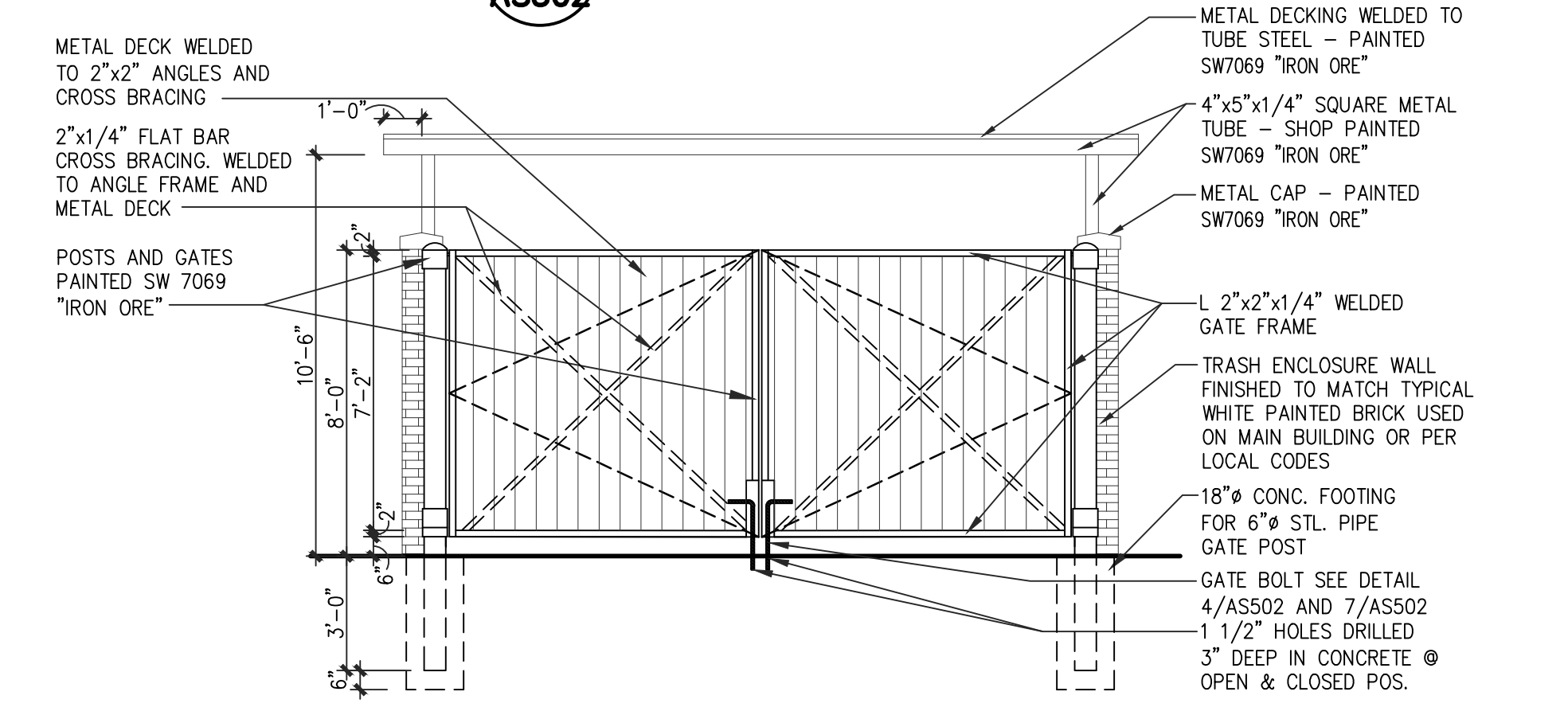
**7 GATE LATCH HOOK**  
 AS502 SCALE: 3/4" = 1'-0"



**4 GATE SLIDE BOLT LATCH**  
 AS502 SCALE: N.T.S.



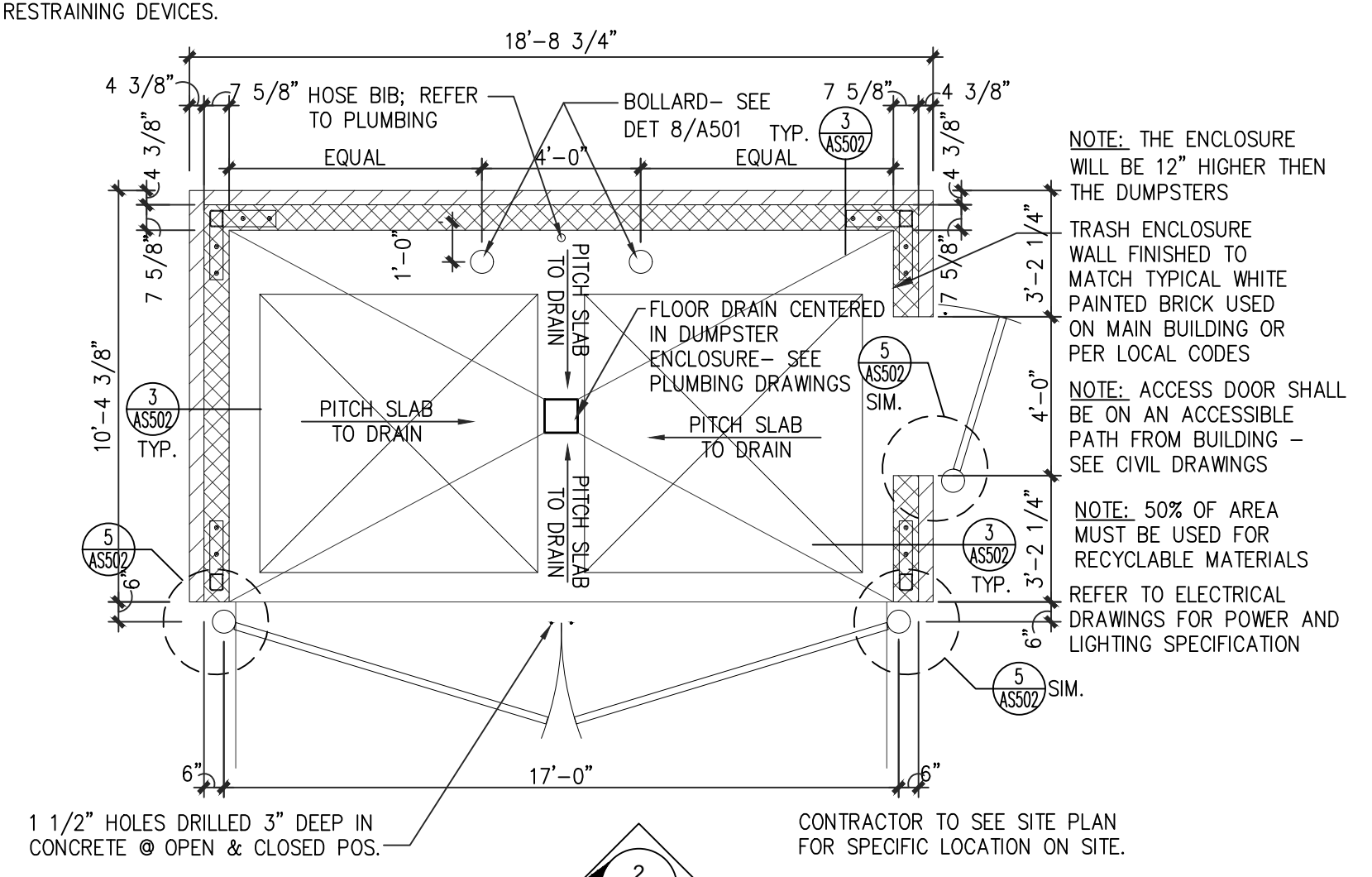
**3 EXTERIOR WALL**  
 AS502 SCALE: 3/4" = 1'-0"



**2 FRONT ELEVATION**  
 AS502 SCALE: 1/4" = 1'-0"

NOTE: THE WASTE STORAGE AREA SHALL BE GRADED SO THAT STORAGE CONTAINERS REMAIN AT REST WITHOUT AUXILIARY RESTRAINING DEVICES.

CONTRACTOR TO SEE SITE PLAN FOR SPECIFIC LOCATION ON SITE.



**1 TRASH CORRAL ENCLOSURE**  
 AS502 SCALE: 1/4" = 1'-0"