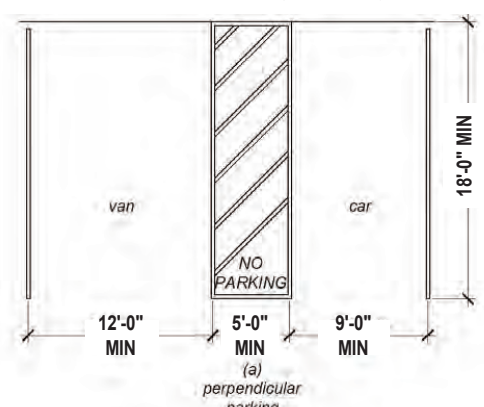


1. PASSENGER DROP - OFF & LOADING ZONE ACCESS ASILE

General: Car and van parking spaces shall comply with Section 11B-502. Where parking spaces are marked with lines, width measurements of parking spaces and access aisles shall be made from the centerline of the markings.
 Exception: Where parking spaces or access aisles are not adjacent to another parking space or access aisle, measurements shall be permitted to include the full width of the line defining the parking space or access aisle.

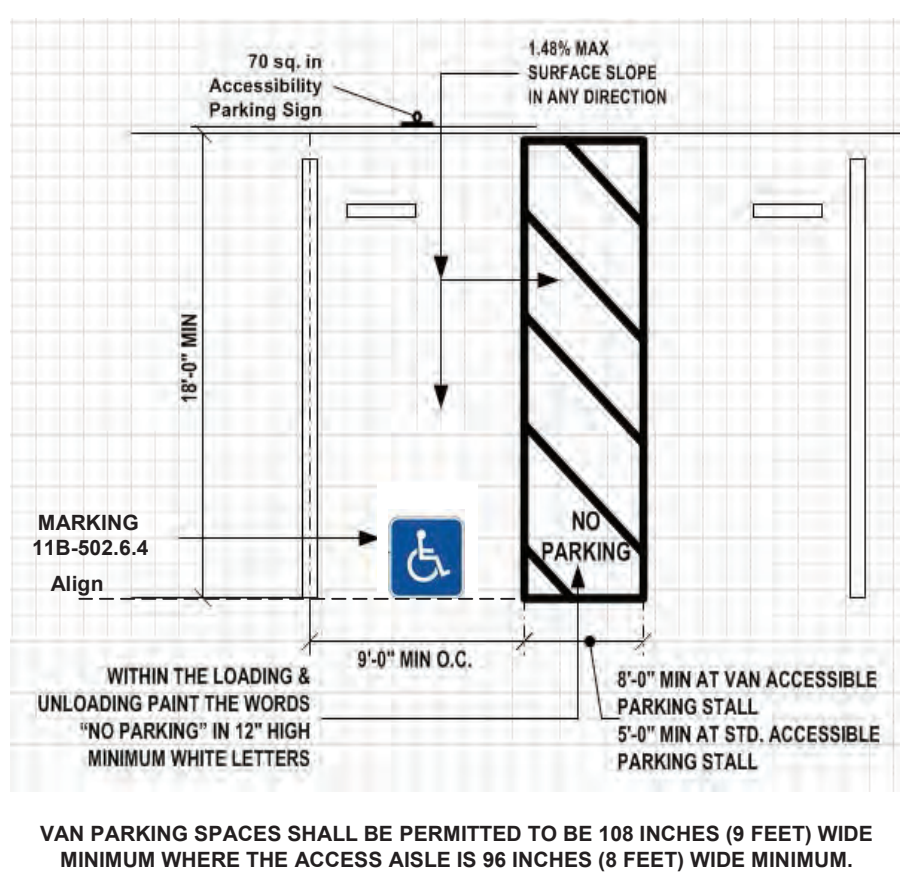
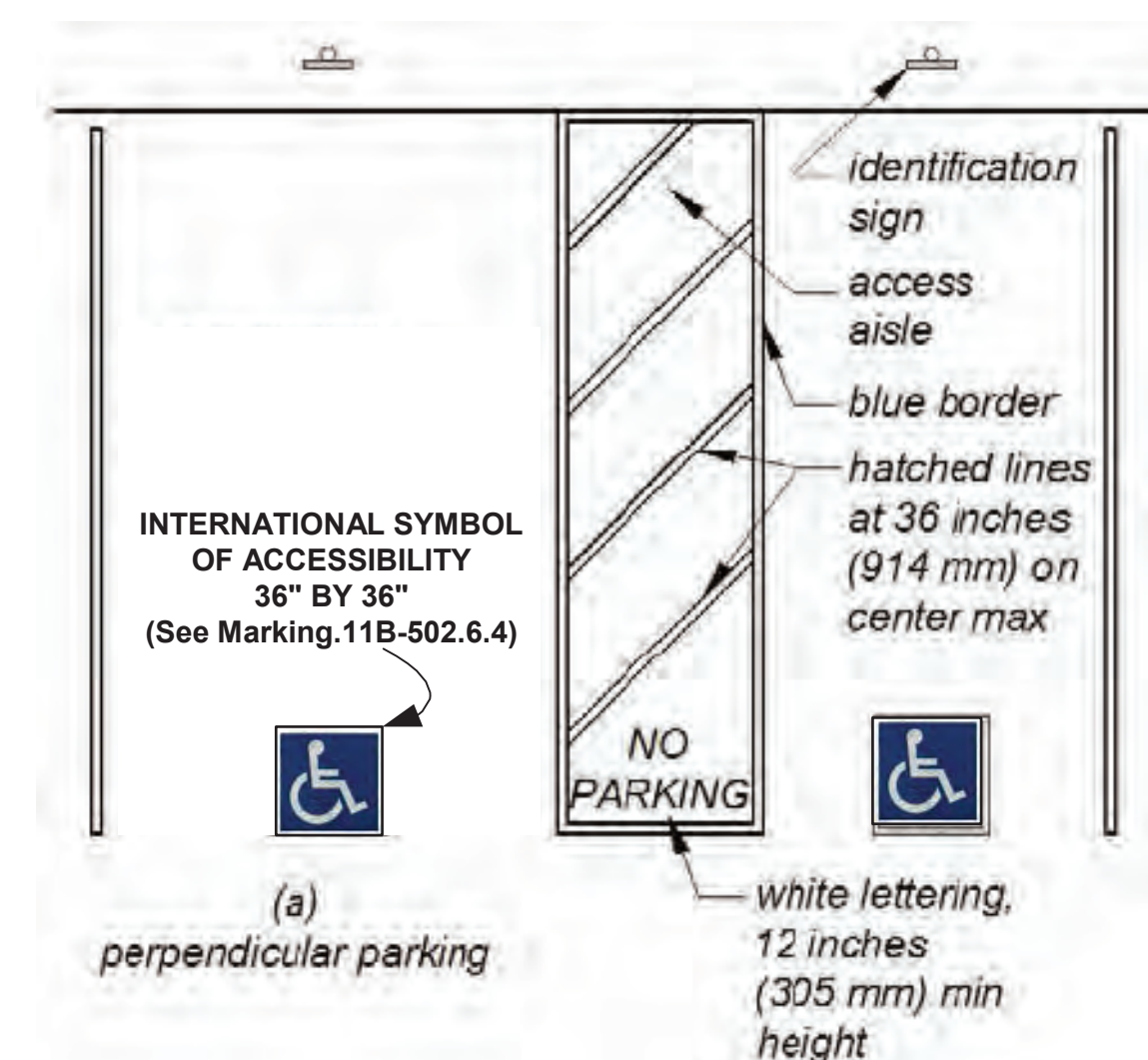


2. PARKING SPACES

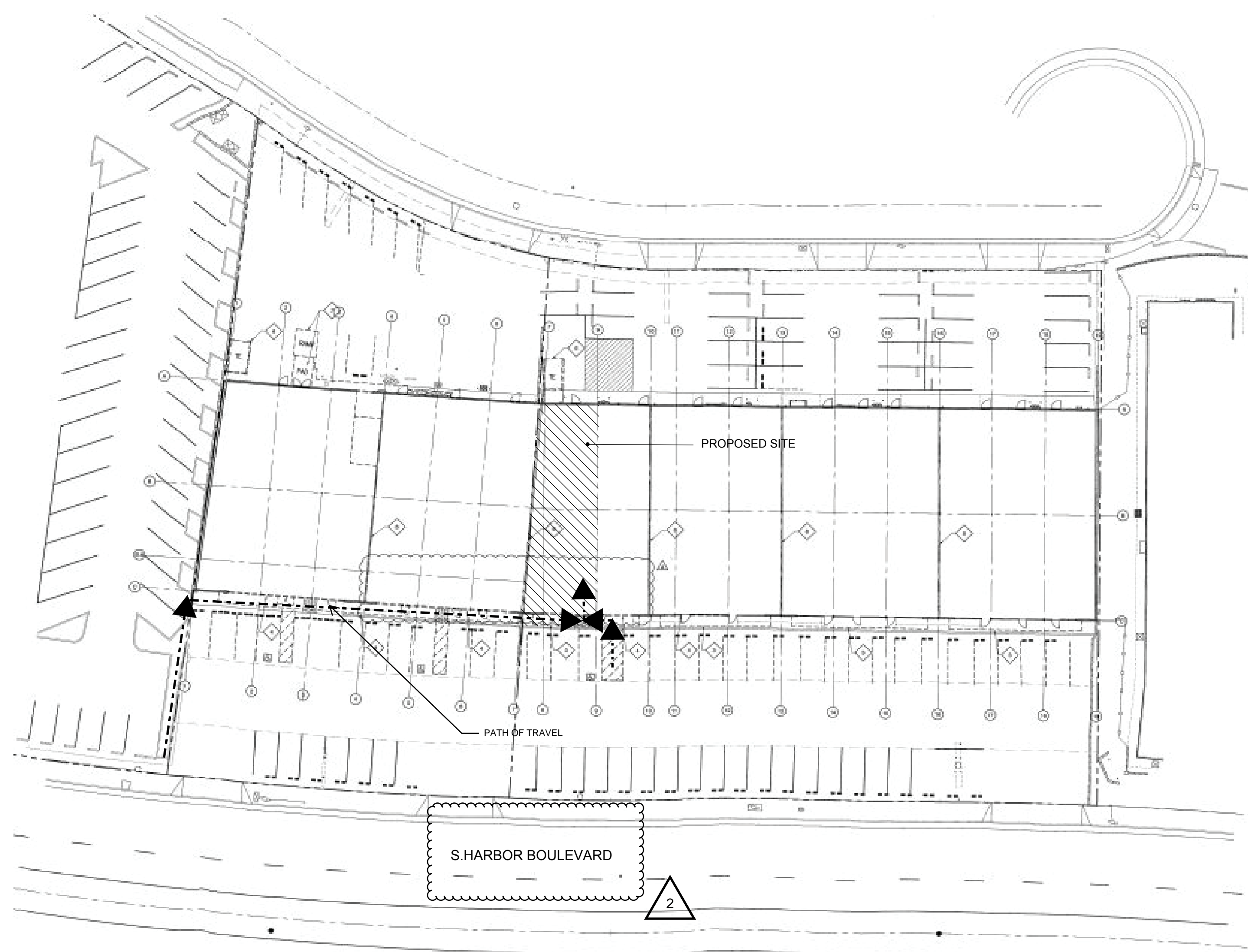


* Unauthorized vehicles parking in designated accessible spaces not displaying distinguishing placards or special license plates issued for persons with disabilities will be towed away at owner's expense. Towed vehicles may be reclaimed at _____ or by telephoning _____.
 Blank spaces are to be filled in with appropriate information as a permanent part of the sign.
 All property lines, easements and buildings, both existing and proposed, are shown on this site plan.

3. ACCESSIBLE PARKING SIGN DETAIL



4. PERPENDICULAR PARKING IDENTIFICATION



SITE PLAN

SCALE: 1" = 40'-0"

ACCESSIBLE NOTES

1. Specify the accessible route to be 5% maximum running slope with 2% maximum cross slope per [CBC 11B-402.2.]
2. Provide detectable warning where the accessible route crosses or adjoins the vehicular path of travel per [CBC 11B-247.1.2.5.]
3. Where curb ramps occur on the accessible route, provide curb ramp details demonstrating compliance with [CBC 11B-406]



CREDOS BUILDERS, INC

520 S LA FAYETTE PARK PL, #100
 LOS ANGELES, CA 90057
 TEL : 213-384-9600
 FAX : 213-384-9800
 Dkim@credosinc.com

PROJECT NAME & ADDRESS

FURAI CHICKEN - LA HABRA
 1460 S HARBOR BLVD
 LA HABRA, CA 90631



THE ABOVE DRAWINGS AND SPECIFICATIONS ARE PREPARED BY ME OR UNDER MY CLOSE PERSONAL SUPERVISION AND I AM A LICENSED PROFESSIONAL ENGINEER IN THE STATE OF CALIFORNIA. I AM NOT PROVIDING CONTRACT ADMINISTRATION SERVICES FOR THIS PROJECT. I AM NOT PROVIDING CONTRACT ADMINISTRATION SERVICES FOR THIS PROJECT. I AM NOT PROVIDING CONTRACT ADMINISTRATION SERVICES FOR THIS PROJECT.

OWNER & CONSULTANT

ARCHITECT & DESIGN
 CREDOS
 520 S LA FAYETTE PARK PL, #100
 LOS ANGELES, CA 90057
 T: 213-210-4391

MEP
 JS ENGINEERING
 410 S SAN GABRIEL BLVD, # 8
 SAN GABRIEL BLVD, CA 91776
 T: 626-497-0558

STRUCTURE
 LEE & LEE
 3550 W WILSHIRE BLVD, #480
 LOS ANGELES, CA 90010
 T: 213-268-0935

OWNER
 DMI HARBOR HILLS
 10200 SEPULVEDA BLVD, # 290
 LOS ANGELES, CA 91345
 T: 747-236-2600
 CONTACT : BJ KIM
 E-MAIL : BJKIM@DMIREGROUP.COM

REVISION

PROJECT # : A8C-109
 CAD FILE : A8C-109
 COPY RIGHT :
 PRINT DATE :
 FIRST SUBMITTAL :
 FIRST REVISION :
 SECOND REVISION :

SITE PLAN

